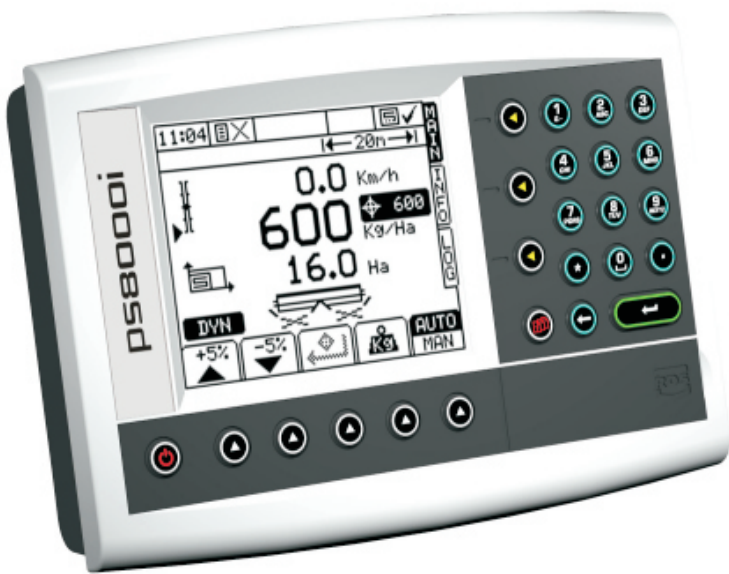


PSi

Monitor and Control

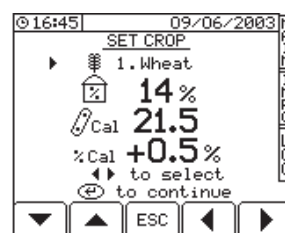
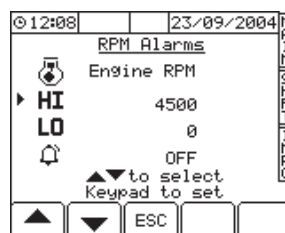
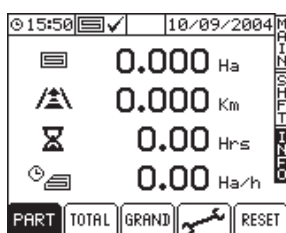
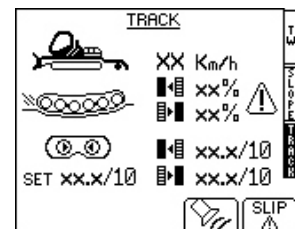
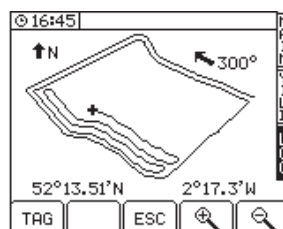
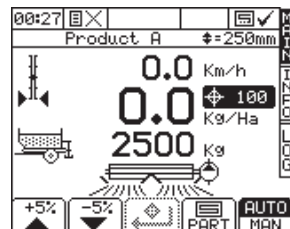
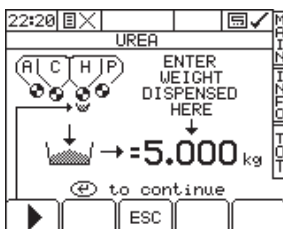


Instrument dimensions:
W:220mm x H:156mm x D:52mm
Panel mounting aperture:
215mm x 149mm

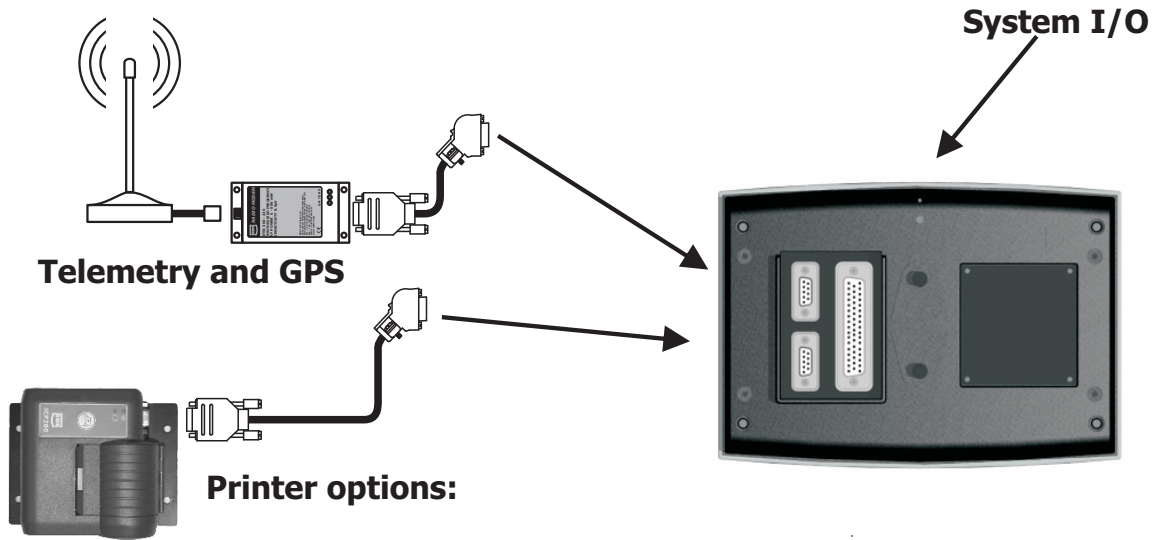
The PSi is an evolution of the Pro-Series.

A powerful menu driven instrument with graphical display, suitable for advanced monitoring and control functions. Functionality is further increased with an integral SD card reader.

Sample Screens:



System overview with data connections:



Specification:

Power supply: 10 - 30V dc	Outputs: 4 transistor (500mA)
Current consumption: 500mA + outputs	3 x 2 H bridge (2.5A)
Display: 160 x 128 pixel dot matrix	3 analogue (0-Vss @ 50mA max)
LCD Variable contrast and adjustable illumination.	Communications: 2 x RS232, 1x CAN, LBS (optional)
Front panel switches: 24 elastomeric	Protection: Reverse polarity protected
Processor: Hitachi H8/300H	Enclosure: ABS moulding, aluminium Internal chassis.
Memory: Program storage: 512k	Mounting: Free standing or panel mount
Flash	EMC: 2004/108/EC ISO 14982
Data storage: 128k SRAM	Temperature 0 to 50°C operating
On-board SD/MMC port	-30 to 70°C storage
Inputs: 6 x digital (lo going)	Vibration: 5G @ 10 to 500Hz
10 x digital (hi or lo going)	Shock: 100G
4 x analogue (0 - 7.5V)	Sealing: IP54

For further information, please contact the OEM department on the details below or e-mail: rds.sales@rdstec.com

Errors and omissions excepted. Technical details are subject to change. ref: PSi/rev1.2

